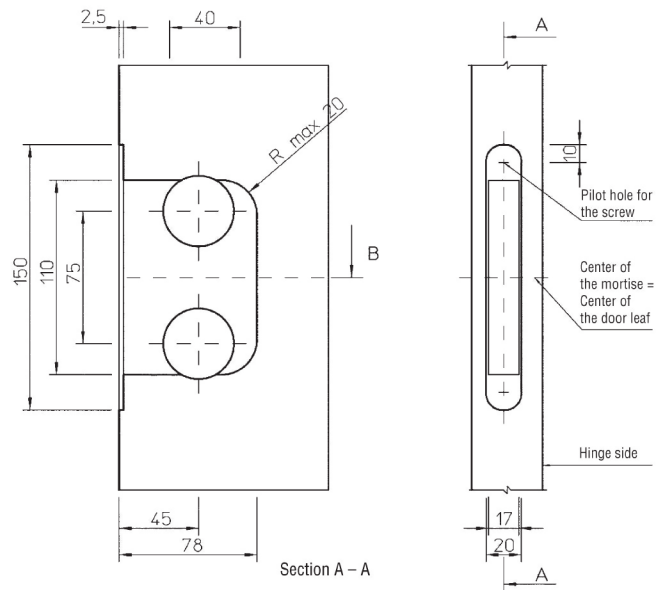
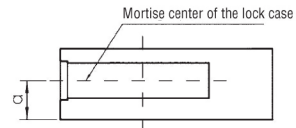


# VAL2014



Section A - A

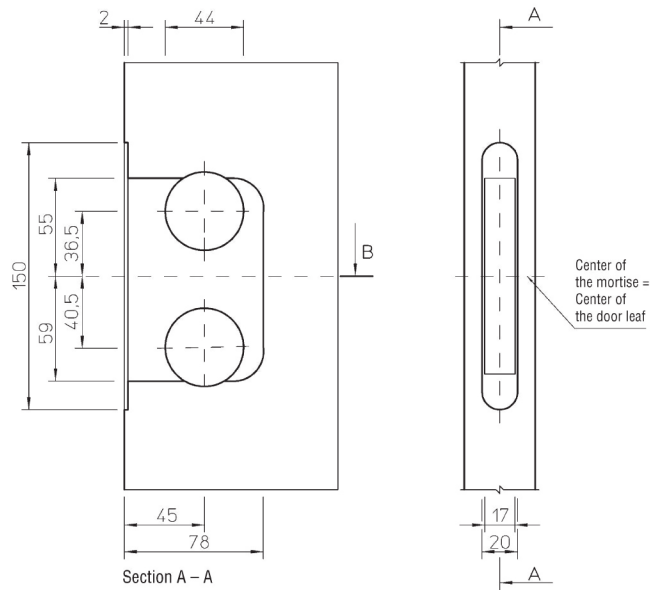


Door without seals  $a = 20$  / Door with seals  $a = 22$

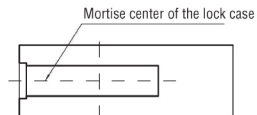
Section B - B

When 7640 cover plate is used with locks 2024 and 2025 it is recommended to make the mortise for the forend 3 mm deep.

# VAL2018



Section A - A



Section B - B

**valnes**<sup>®</sup>

Turvalisem elu